

European technology Group



GR4

GR4
Dual

Groundtech | Conrad
Metal Detectors



GR-4 Dual

The GR-4 Dual is a cutting-edge metal detection system designed for professional treasure hunters and field researchers. It comes equipped with a dual sensor (MFS-2) for advanced 3D ground scanning, a powerful pulse induction coil for deep metal detection, and a compact control unit that connects wirelessly to mobile devices. Its telescopic shaft ensures ergonomic handling across rugged terrain, while the rechargeable battery pack supports extended use. All components are securely housed in a padded carrying case, making the GR-4 Dual both powerful and portable for serious exploration.

1.

2.

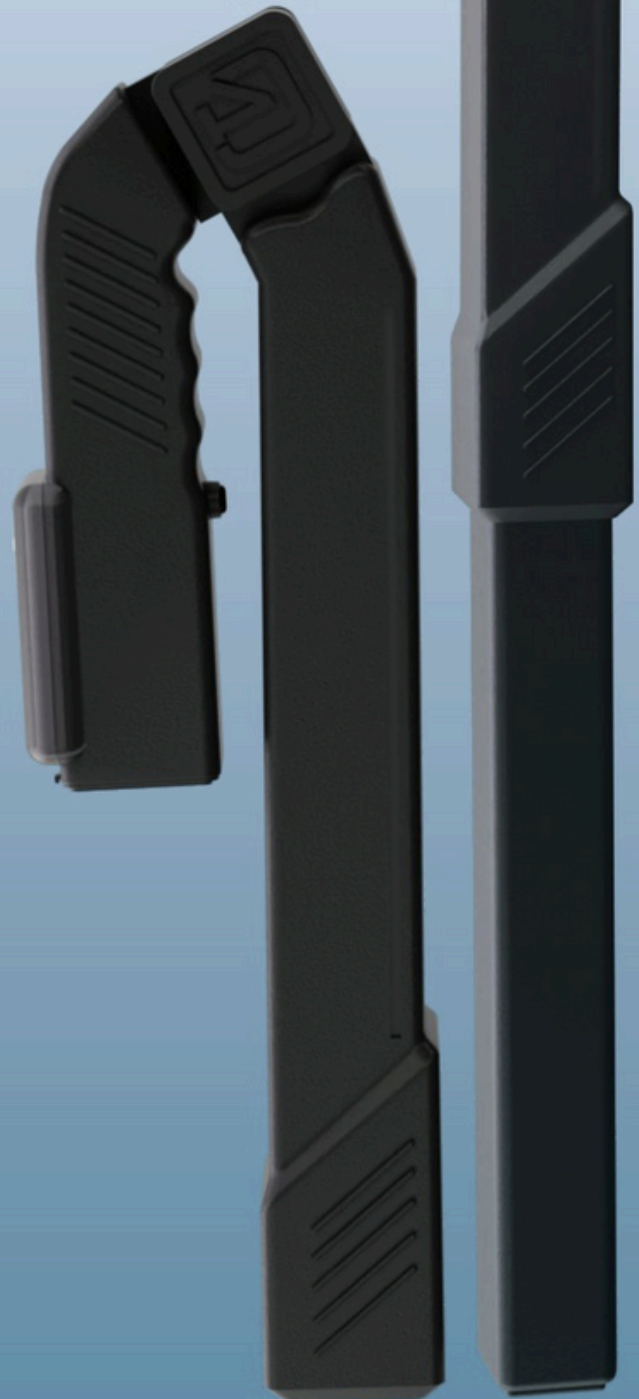
GR4

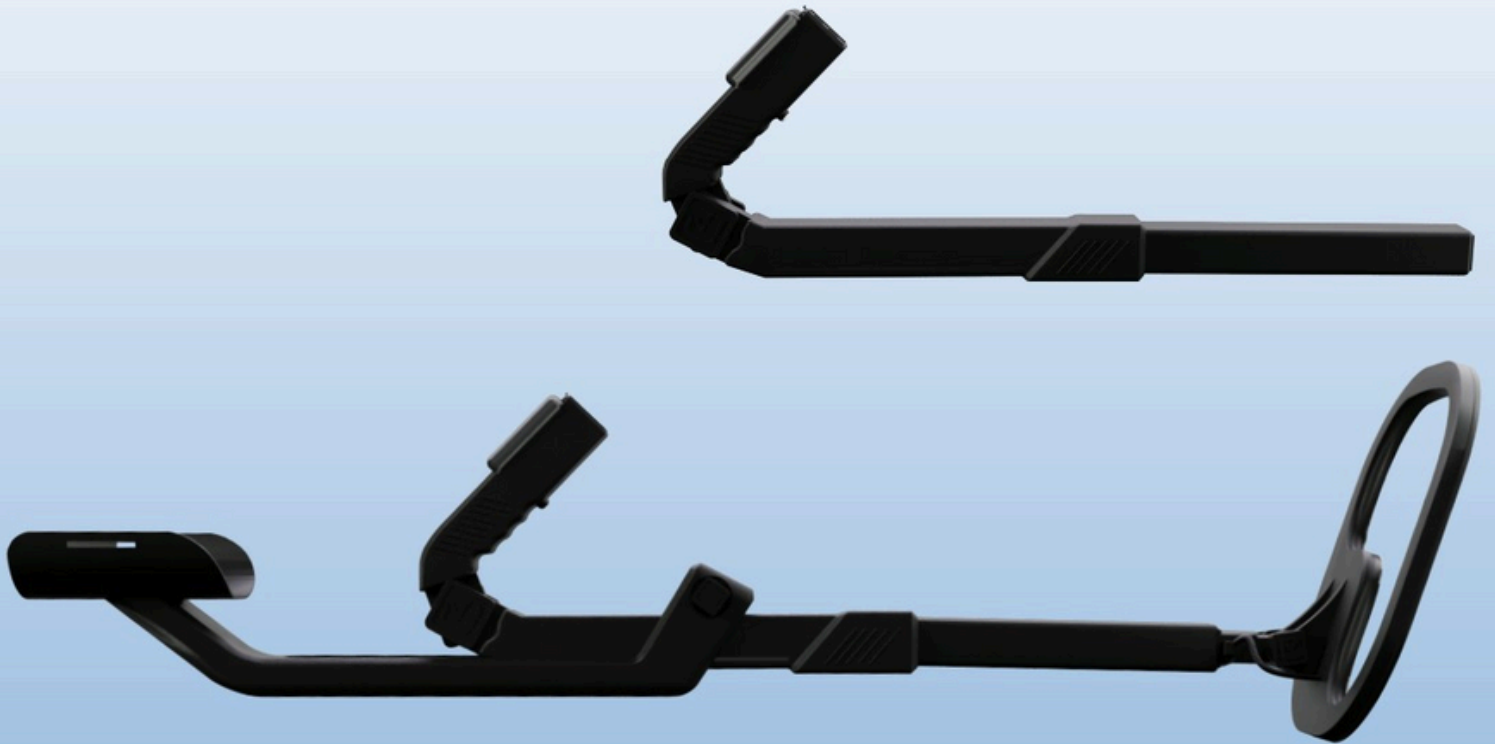


- 1- Advanced 3D Ground Scanning System
- 2- Multiple Scanning Modes
- 3- Pulse Induction (PI) Technology
- 4- Compact and User-Friendly Design

GR-4 Dual

The Groundtech GR-4 is a next-generation 3D ground scanner designed for detecting underground metals, cavities, and anomalies with high precision. It uses advanced MFS-2 Dual Sensor technology to scan depths of up to 15 meters, making it ideal for treasure hunters, archaeologists, and geophysical professionals. The device supports multiple scanning modes—including 3D Ground Scanning, Live Scanning, Pinpointer, and Quick Scan—and operates via a user-friendly Android or iOS app. Compact and portable, the GR-4 offers real-time analysis and visualization of subsurface structures like tunnels, graves, and buried artifacts.





GR-4 Dual

Groundtech GR-4

The Groundtech GR-4 is a compact and user-friendly 3D ground scanner designed for detecting underground anomalies such as metals, cavities, graves, and tunnels. It features multiple scanning modes including:

- 3D Ground Scanning
- Quick Scan
- Pinpointer
- Live Scanning This device is controlled via a mobile app (Android/iOS), allowing users to visualize subsurface structures in real time. Its simplified design makes it accessible for both professionals and hobbyists, offering reliable performance in various terrains.

Groundtech GR-4

Dual The GR-4 Dual builds on the original GR-4 by integrating MFS-2 Dual Sensor technology and a Pulse Induction (PI) system, significantly enhancing depth and detection accuracy. Key features include:

- Scanning depth up to 15 meters
- Six advanced scanning modes
- Real-time 3D analysis
- Detection of magnetic objects, metals, and voids This dual system allows users to perform deep scans with high precision, making it ideal for archaeological surveys, treasure hunting, and geophysical exploration. Its versatility and powerful sensor suite make it a standout in the field of underground imaging.

Screen Features

Mobile App Interface: Instead of a built-in screen, the GR-4 connects wirelessly to Android and iOS devices via a dedicated app, turning your smartphone or tablet into a dynamic control and visualization hub.

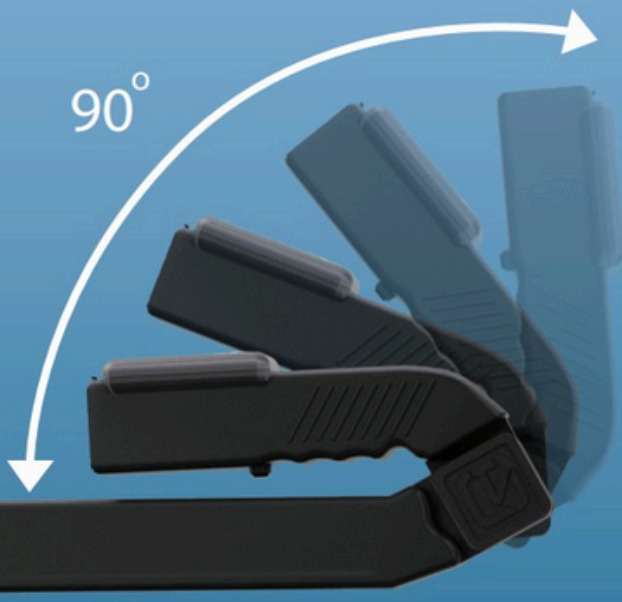
Real-Time 3D Imaging:

The app displays detailed subsurface scans in real time, allowing users to analyze anomalies like metals, voids, and graves with precision. **Touch-Friendly Controls:** The app interface is optimized for touch navigation, making it easy to switch between scanning modes and interpret data on the go.

Ergonomic Design:

- **Compact and Lightweight:** The GR-4 series is built for portability, with a streamlined body that reduces fatigue during long field sessions.
- **Simplified Setup:** Its plug-and-play sensor system and intuitive app reduce the learning curve, making it accessible for both professionals and hobbyists.
- **Comfortable Grip and Handling:** Designed to be held and maneuvered easily, the device supports extended use without strain, even in rugged terrain.

This combination of ergonomic hardware and smart software makes the GR-4 series a standout in underground imaging.



Technical Specification Comparison

FEATURE	SPECIFICATION GR4-DUAL	SPECIFICATION GR4
Detection Technology	MFS-2 (Multi Frequency System) + Pulse Induction (PI)	MFS-2 (Multi Frequency System)
Detection Depth	Up to 15 meters	Up to 15 meters
Sensor Type	MFS-2 Dual Sensor (Gradiometer) + PI Coil	MFS-2 Dual Sensor
Search Modes	3D Ground Scan, Pinpointer, Fast Detector, Advanced Scan, Live scan	3D Scan, Pinpointer, Live Scan,
Target Detection	Gold, metals, magnetic anomalies, graves, rooms, tunnels	Metals, Gold, Voids, Underground Cavities
Operating System	Android / iOS application	Android / iOS application
Display & Analysis	Real-time 3D imaging and subsurface analysis	Real-time 3D imaging and subsurface analysis
Data Transfer	Wireless (Bluetooth) + cable	Wireless (Bluetooth) + cable
Power Supply	Rechargeable lithium-ion	Rechargeable lithium-ion
Design	Compact, lightweight, ergonomic	Compact, lightweight, ergonomic
Warranty	2 years	2 years
Weight	1920 grs.	850 grs.
Country of Manufacture	Turkey	Turkey

(\$) selling price

GR4 1850 \$

GR4- Dual 2450 \$

Ready to Buy?



Now Is the Best Time!

Get your device today at the best price directly from the official distributor in Germany.

At **European Technology Group** (ETG GmbH), we guarantee you:

- ✓ 100% original and certified products
- ✓ Competitive prices within Europe and worldwide
- ✓ Fast and secure international shipping
- ✓ Professional technical support and after-sales service

BUY NOW

CONTACT US



info@eurotechnology-group.com



+49 1573 7338870



Karlsruher Str. 18, 30880 Laatzen, Germany



euro-technologygroup.com